



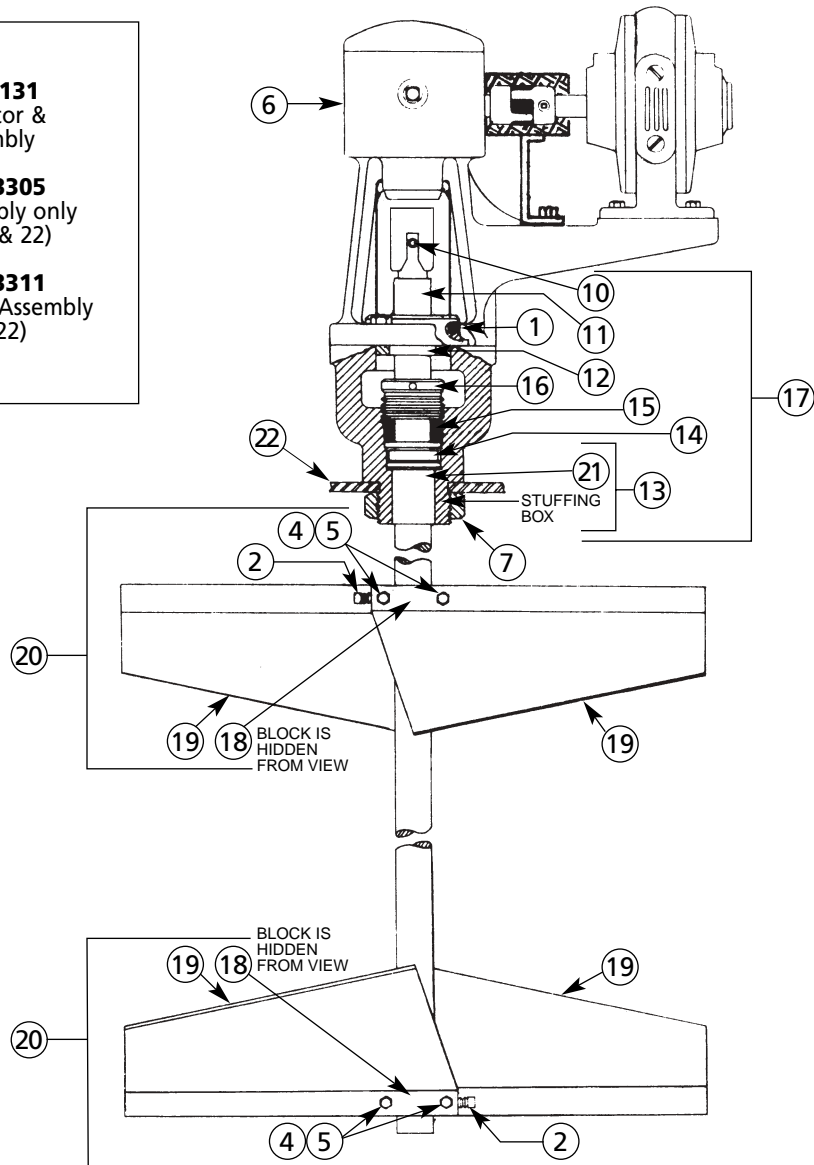
Binks 55 GALLON GEAR DRIVEN DRUM COVER AGITATOR UNITS

Stainless Steel Fitted

MODEL 31-131
Cover, Agitator &
Drive Assembly

MODEL 41-3305
Agitator Assembly only
(Less Items 6 & 22)

MODEL 41-3311
Agitator & Drive Assembly
(Less Item 22)



PARTS LIST

When ordering, please specify Part No.

ITEM NO.	PART NO.	DESCRIPTION	QTY.	ITEM NO.	PART NO.	DESCRIPTION	QTY.
1	20-1237	SOC. HD. SET SCREW, 1/4-20 x 1/4" Lg.....	1	11	83-2099	SHAFT	1
2	20-1741	SQ. HD. SET SCREW, Stainless.....	2	12	83-2107	BEARING ASSEMBLY.....	1
3*	20-1753	BUSHING, 1/4 NPT(F) x 3/8 NPT(M), (Not Shown).....	1	13	83-2109	BOX ASSEMBLY	1
4	20-2077	HEX. HD. CAP SCREW, 5/16-18 x 1-1/2" Lg., Stainless.....	4	14	83-2110	WASHER	1
5	20-2079	HEX. NUT, 5/16-18, Stainless	4	15	83-2111	PACKING	4
6	31-121	AIR MOTOR DRIVE UNIT	1	16	83-2112	GLAND	1
7	41-172	LOCK NUT	1	17	83-2114	STUFFING BOX ASSEMBLY	1
8*	57-13	D.M. NIPPLE (Not Shown)	1	18	83-2132	BLOCK	2
9*	71-1231	HOSE ASSEMBLY, 5/16" I.D. x 11-1/2" Lg., (Not Shown)	1	19	83-2194	PADDLE	4
10	83-1211	PIN	1	20	83-2197	PADDLE ASSEMBLY	2
				21	83-3032	BEARING	1
				22	31-124	COVER ASSEMBLY	1

*FOR AIR CONTROL WHEN REQUIRED.

Replaces Part Sheet 1657R-5 | Part Sheet 1657R-6

Binks MODEL 31-121 AIR MOTOR DRIVE UNIT OPERATING INSTRUCTIONS

SPEED: The speed of the air motor is regulated by the 73-159 Air Adjusting Valve. The ideal speed of the agitator shaft is 30 to 40 RPM. It should not run faster.

LUBRICATION, Air Motor: Every day, add 4 to 5 drops of SAE No. 10 non-detergent oil into the air inlet to lubricate the vanes and internal housing surfaces. The air motor bearings are pre-lubricated and sealed. They do not require additional lubrication.

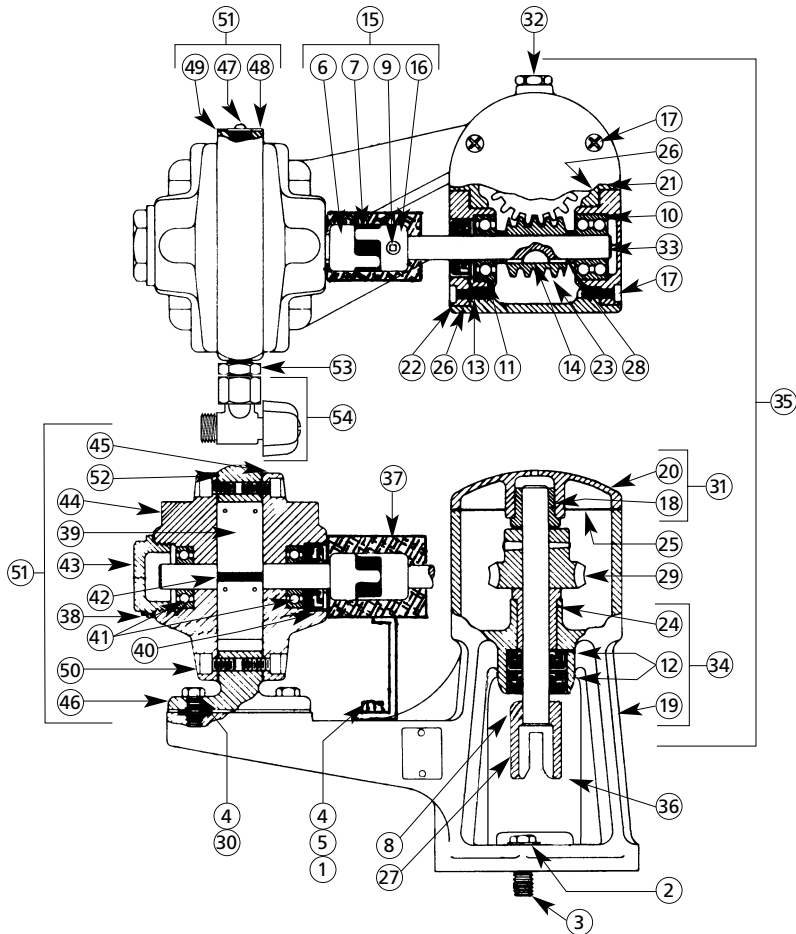
LUBRICATION, Worm Gear Speed Reducer:

The worm gear reducer is to be filled to the 31-63 Cap, and must be inspected for proper level at least once a month. Use a high grade gear oil lubricant such as Mobile No. 600 W, American Oil No. 140, or equivalent.

AIR SUPPLY: The air used to operate this unit should come direct from a high pressure source; do not use air that has passed through a regulator. For best results, the air should be at 60 PSI, minimum, and should be cleaned and dried by passing it through an oil and water extractor.

ITEM NO.	PART NO.	DESCRIPTION	QTY.
1	20-301	Nut, 1/4"-20	1
2	20-354	Lockwasher	2
3	20-387	3/8-16 x 1" Hex Cap Screw	2
4	20-537	1/4-20 x 1/4" Hex Cap Screw	5
5	20-1041	Lockwasher, 1/4"	1
6	20-1067	Coupling, 1/2" Bore	1
7	20-1068	Rubber Spider	1
8	20-1076	5/16-18 x 5/16 Soc. Hd. Set Screw	1
9	20-1237	1/4-20 x 1/4" Soc. Hd. Set Screw	2
10	20-1754	Bearing	1
11	20-1755	Bearing	1
12	20-1756	Oil Seal	2
13	20-1757	Oil Seal	1
14	20-1758	Key	1
15	20-1759	Coupling Assembly	1
16	20-1760	Coupling, 12 M. M. Bore	1
17	20-4987	No. 10-24 x 1/2" Phillips Head Machine Screw	10
18	20-5424	Bearing	1
19	31-46	Housing	1
20	31-47	Cover	1
21	31-48	Carrier	1
22	31-49	Carrier	1
23	31-51	Worm	1
24	31-54	Bearing	1
25	31-55	Cover Gasket	2
26	31-56	Carrier Gasket	2
27	31-57	Coupling	1
28	31-58	Spacer	1
29	31-59	Worm Assembly	1
30	31-60	Washer	4
31	31-62	Cover Assembly	1
32	31-63	Cap	1
33	31-64	Shaft & Bushing	1
34	31-84	Housing Assembly	1
35	31-115	Gear Reducer Assembly	1
36	31-351	Guard	2
37	31-303	Guard	1
38*	37-85	Gasket	1
39	37-89	Rotor & Shaft	1
40*	37-90	Oil Seal	1
41*	37-91	Bearing	2
42*	37-92	Rotor Vane	4
43	37-96	Plug	1
44	37-253	Dead End Plate	1
45	37-254	Drive End Plate	1
46	37-255	Housing	1
47	37-256	Round Head Screw	2
48	37-257	Muffler Cover	1
49*	37-258	Felt	1
50	37-259	Cap Screw	12
51	37-260	Air Motor Complete	1
52*	37-337	End Plate Gasket	2
53	57-13	D.M. Nipple	1
54	73-159	Air Adjusting Valve	1

■ Guard not shown for graphic effect.
* Items also available in 6-183 Repair Kit, please order separately.



Sales and Service Through a Nationwide Network of Industrial Distributors.

Customer Service in USA / 1-800-992-4657
Technical Support in USA / 1-888-992-4657

1657R-6 Revisions: Updated graphic standards; updated both diagrams and both Parts Lists.